



Figure 1



Figure 2

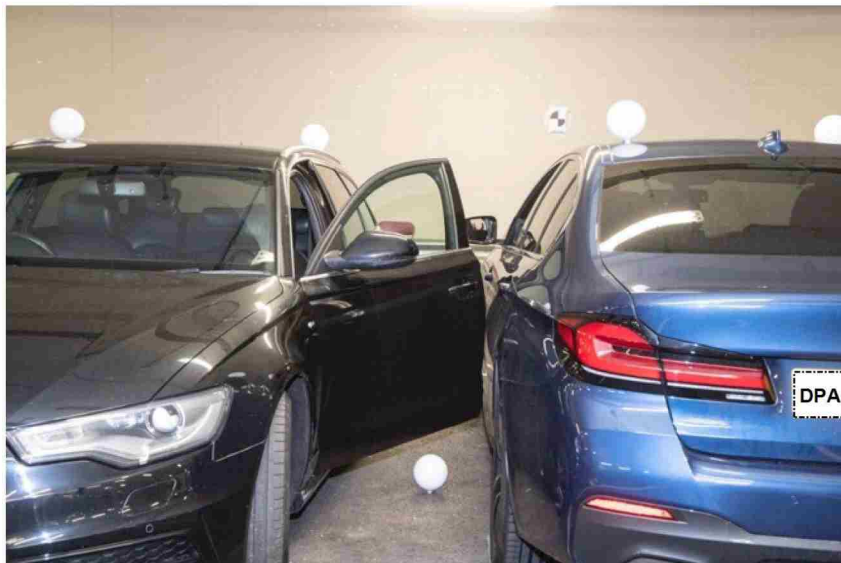


Figure 3



Figure 4

Internal views (Figures 5-7) of the Audi showing the position of the seat and rake of the seat back.

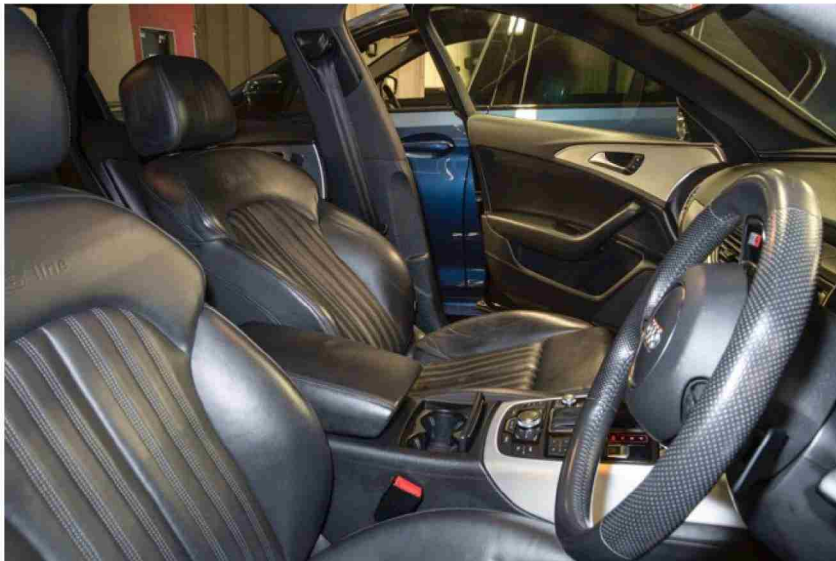


Figure 5



Figure 6

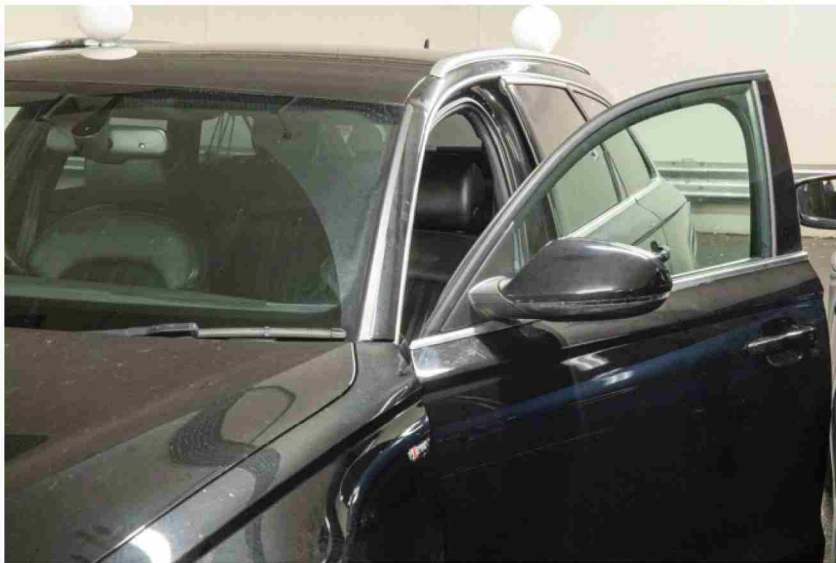


Figure 7

The Police Tactical rifle AAB/01 was held by an AFO of a similar build to W80 and well versed in the tactical procedures and positioning that would have been used by W80 on the day of the shooting incident at Bracknell Close, Wood Green, London.

W80's position is limited by the space between the Audi and the BMW. The exact position/stance of W80 at the time that the shot was fired is unknown.

Figure 8. below shows area where W80 would have stood.



Figure 8

One of the possible positions of W80 in-front of the opened car door and between the Audi and the BMW

Agreed

The following were agreed by the experts;

1. the passenger seat position and rake of the seat back (*3D scan evidence by Railton*).
2. W80 was standing between the two vehicles and behind the open Audi door.
3. the muzzle of the tactical rifle was inside the Audi vehicle between the open door and the vehicle's A pillar (*Gunshot Residue and Ballistic evidence*).
4. the trajectory from W80's perspective was from right to left, and slightly downwards.
5. Jermaine Baker's left wrist was raised above the entry wound to the neck, although the position (height) of the wrist is unknown (*trajectory evidence*).
6. Mr. Baker's right shoulder area was supported by the back of the passenger seat at the moment the shot was fired (*based on the expert evidence that the wound on his back was shored*).
7. The muzzle of the tactical rifle was within 50cm (max) of the left wrist (minimum distance a few centimetres away from the muzzle but not contact) (*Ballistic expert evidence*).
8. The damage to the man-bag strap was caused by the bullet.

W80 was positioned between the two cars. The distance between the two cars was approximately 62 cm based on the CAMBs 3D post incident scanning. W80 could have been positioned anywhere behind and in close proximity to the Audi's opened front nearside car door. However, the muzzle of the tactical rifle was inside the Audi vehicle forward of the vehicle's A Pillar and this is based on the Gunshot Residue and Ballistic evidence.

Regardless of the possible postures of Jermaine Baker at the moment the shot was fired, the trajectory from W80's perspective was from right to left, and travelling downward. Furthermore, at the time the shot was fired, Mr Baker's left wrist was slightly raised above the entry wound to the neck.

It was noted that the damage to the original clothing was lower than expected suggesting that the clothing had rucked up towards the neck area.

Variables

The following variables were agreed by the experts;

1. The position of W80 relative to the open Audi door and his distance from the wing of the Audi.
2. Jermaine Baker's body position on the seat, and any rotation and/or lateral flexion (side bend).
3. The position of Jermaine Baker's left shoulder, left elbow and left wrist.
4. The position of Jermaine Baker's right arm.
5. The position of the man bag (RAC/10) i.e. over which shoulder, and the height on the chest.

Scenarios

It was noted that the position of W80 at the time that the shot was discharged (unknown but within a limited and confined space) would in turn alter the potential position of Jermaine Baker to maintain the agreed trajectory.

1. To determine the position(s) of Jermaine Baker's body.
2. Taking into account 1, to determine the position and rotation of Jermaine Baker's left wrist.
3. Taking into account 1 and 2 to determine the position of the 'man bag'.
4. To determine whether Jermaine Baker's hands could reach the dashboard.

Scenario 1 - The position of Jermaine Baker's body

The reconstruction demonstrated that Jermaine Baker would have been sitting in the passenger seat with the right shoulder supported by the seat back and this could have been positioned anywhere between the raised right edge of the seat back support and in the region of 18cm to the centre of the seat.

The left shoulder could have been either supported by the seat back or in the region of 2.5cm away from the back-seat support with the torso rotated slightly towards the right.



Figure 9



Figure 10

The actor's body position either sitting against the seat back entirely or rotated a short distance away from the passenger seat with the left shoulder in the region of 2.5cm away from the seat back and the right shoulder up to 18cm from the front passenger seat right edge could achieve the expected trajectory as pictured in the below images (Figures 11-12).

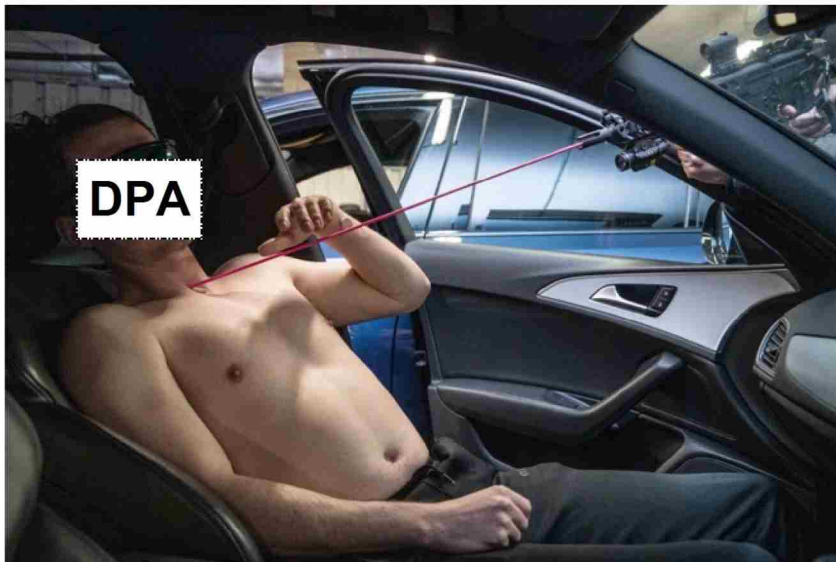


Figure 11

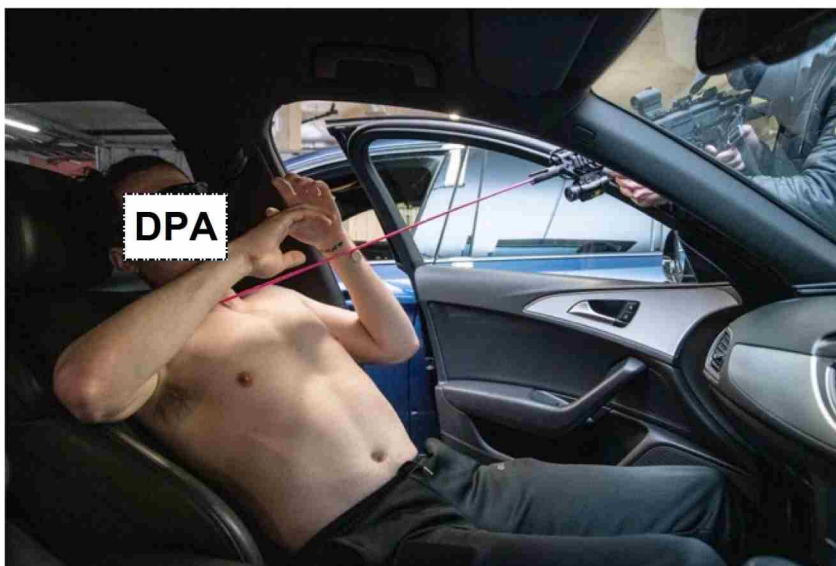


Figure 12

In this reconstruction exercise as shown in the images above (Figures 9-12) the tactical assault rifle muzzle was placed inside the opening of the car between the A pillar and the door opening, 40 cm from the Actor's simulated damage to the outer aspect of left wrist.

Scenario 2 - The position of Jermaine Baker's left wrist

The simulation demonstrated that the left hand, the left wrist and the left elbow could all have been in a number of positions (Figures 9-12).

The gunshot wound to the back of the right shoulder was shored with the position of the right arm in a number of positions (raised/by the side/resting on the centre console) depending on the position of the body on the seat (Figures 9-12).

Scenario 3 - The position of the 'man bag'

Scenarios were conducted to explore possible options for the position of the man-bag on Jermaine Baker at the time the shot was fired, these included being worn over either shoulder, and different positions on the chest.

It is not known whether Jermaine Baker was left or right handed.

When the man-bag was worn by the actor to their left side as shown in the two images below (Figure 13,14), its front aspect can be seen away from the body and the damage to the shoulder strap correlating with the entry wound to the neck area.

It should be noted that during the positioning of the bag in various positions on the actor, the length of the straps was never physically shortened. Rather, the straps were pulled behind the actor's back and compressed between the back and the seat.

With the strap extended, the man-bag position would be on the side of the actor as represented in the image (Figure 13) below.



Figure 13



Figure 14

The position of the man-bag toward the upper area of the chest (Figure 14) would be achieved if one of the straps is held between the actor's back and the seat.

The scenarios demonstrated that the man bag could also have been worn over the left shoulder with the bag sitting on the right side or high on the right side of the chest. (Figures 15 & 16)

The position of the man-bag on the right side is achieved if its rear aspect is facing away from the body. The position of the man-bag toward the upper area of the chest would be achieved if the strap is held in place by the actor's back leaning against the seat.

In these scenarios the damage to the shoulder straps correlated with the entry wound to the neck area.



Figure 15



Figure 16

The damage to the strap of the man bag is consistent with it being worn on either side of the body of Mr Jermaine Baker with the strap being over the head and under the arm and with the man bag being in a number of potential positions (accepting that the strap would have been held in place by the actor's back leaning against the seat for some of the positions), and described and shown in the photographs taken at the reconstruction exercise.

The images (Figures 17-19) below show the man-bag and the actor's arms /hands in different positions.



Figure 17



Figure 18



Figure 19

Scenario 4 - Whether Jermaine Baker's hands could reach dashboard

Assuming the front nearside seat was not moved post incident (prior to the 3D scan being undertaken) and assuming that the actor has similar length arms as Jermaine Baker, then Mr Baker could not have reached the front of the dash-board at the time the shot was fired.



Figure 20



Figure 21

The potential positions of W80

The experts agree that the alternative positions of W80 at the time that the shot was fired will in turn impact on the potential position of Mr. Baker albeit W80's and Jermaine baker's respective potential positions are within a confined and limited space.



Figure 22



Figure 23



Figure 24



Figure 25



Figure 26



Figure 27



Figure 28



Figure 29